

# Instruction of removal & assembly of the “BEAT” seat trim cover

The removal and assembly can be done at your local Honda dealer or upholstery shop.  
However, for those who want to do it by yourselves, follow these instructions.

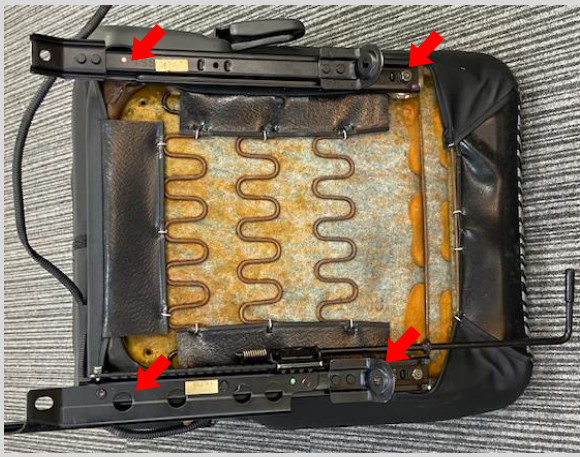


Beat Seat Trim Cover packing style

< Tool required >

- Remove/Assemble: Wrenches, hexagonal wrenches(6mm), nipper, C-ring wrench, C-rings (Zip ties or string can be substituted.)
- Urethane foam repair: Spray adhesive(ex.3M 77), fabrics for repair, Polyurethane brock, Polyurethane form,  
You may use the polyurethane foam included in the package (although the density is low because it is for lamination) if you can.





Remove the seat adjusters from the seat.  
(Slide the rails and remove)



Remove the recliner lever.  
(It is just stuck in place.)



Remove the recliner cover.



Push it diagonally upward  
from front lower.



Remove the bolt which fastens  
the seat cushion and back.



Remove the other side.

Now the back and cushion are separated.  
The same applies to the passenger seat.







This is the process of removing the trim cover from the seat cushion.  
Turn the seat cushion over.  
Remove all the C-rings that hold the trim cover in place.  
(C-rings are very hard, so we recommend using wire cutters rather than nippers.)



Remove the C-rings from the side bolster area and the listing area of the cushion.



Remove C-rings from the listing wires of cushion center.

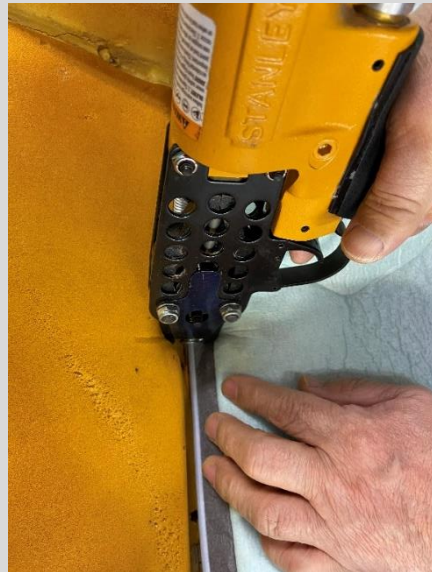




Now, old trim cover is removed.



Place new trim cover.



3

Start from fastening of the listing area of the cushion center.

Next, fasten all the way around the side bolsters and the listing area of the cushion.





Cover it with the groove.



Seam edge inside should be outward.



After finishing the covering, clip the back side all the way around. Pull hard on the trim cover to keep it from sagging.





Fasten all the way around.



Adjust the shape by hand checking the location of the seam edge inside.

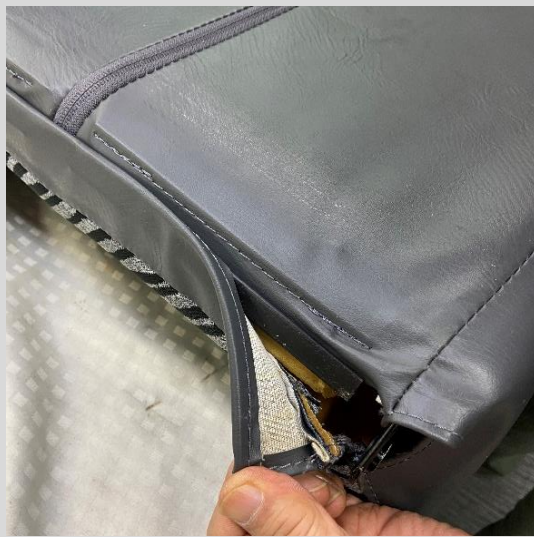


Cushion completed.

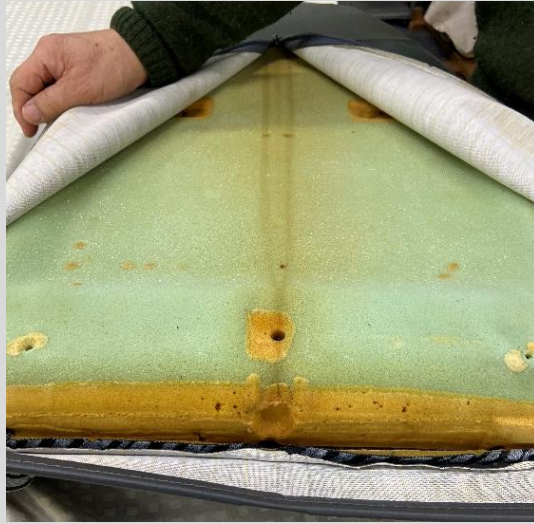


Next work on the seat back.





Remove the plastic retainer at the bottom of the seat back. (It is just pinched in.)



Open the zipper on the back of the seat.





Flip up the seat trim cover and remove the C-rings on the listing wire of the seat center.



Similarly, remove the C-rings from the listing wire at the bottom of the headrest.

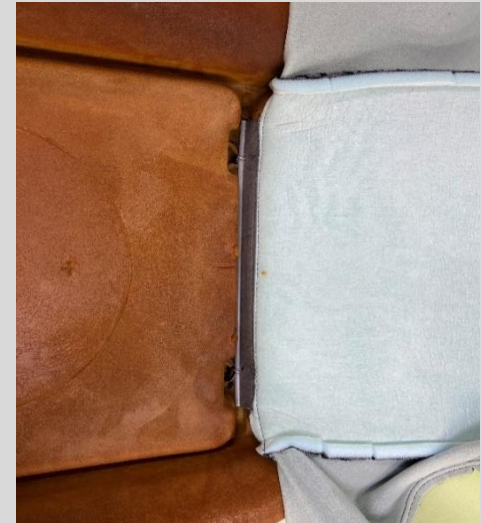




The old trim cover has been removed.



Put on the new trim cover.



Put on the new trim cover and fasten it in the reverse order of the removal of the old trim cover: apply C-rings to the listing wire of the lower part of the headrest, and then the center part.





Covering along the groove.



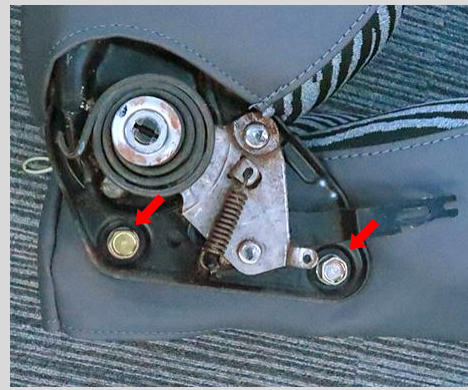
Close the zipper so the seam edge is outward (toward the side facing).



Fasten the plastic clip at the bottom.

9 If it is difficult to fasten, use a flathead screwdriver or similar tool to insert the clip.





Make holes in the side of the seat where the recliner bracket will be installed. (These holes are not provided because the position of the hole may shift depending on the trim cover is covered.)

Fasten the recliner bracket and fasten the other side.



Insert the recliner cover and fasten it with a screw using a screwdriver.

Insert the recliner lever to complete.

If the trim cover is sagging, adjust it by squeezing it by hand. Also apply steam with placing a cloth over the trim cover. However, please note that steam at too high temperature will make the synthetic leather hard and cause it to shrink.







This completes the process.

For reference when repairing the damaged urethane base material of the seat:

The procedures for the simple version and the Roku Zero version are shown on the next and subsequent pages.

Please give it a try!

We have included 5 mm urethane foam for the repair, but if you need a different thickness, please contact your local hardware store or handicraft shop.

(It may not be a vehicle grade material, but it's used just under the trim cover, and there's no big problem with them.)



## Repair method of damaged urethane foam base. (simple version)



In the case of simple torn.    After gluing the broken part, reinforce it with a thin cloth.



If the urethane foam is torn off and the frame is exposed, reinforce the shorten area with a cloth and apply urethane foam (the side with the base cloth on the surface).

The side bolster on the opposite side is also likely to have lost urethane foam due to aging, so it would be better to apply urethane foam there as well.

If the urethane on the back of the seat has deteriorated due to sunlight, sweat, etc., or if the cushion is dented, apply urethane foam to that area. (see photo on page 14)

(The center part of the seat of our trim cover is using 10 mm urethane lamination, which is thicker than the mass-production, so the most of the compression of the foam can be recovered to some extent.)



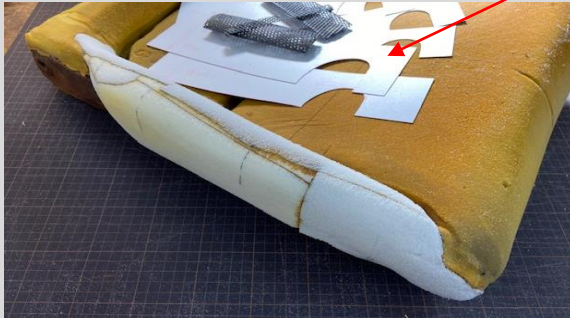
# Repair method of damaged urethane foam base. (STUDIO 6 ZERO version)



In the case of the urethane foam is torn off and the frame is exposed.



After taking the normal section templates, cut the defective area and repair them with urethane blocks of the same density as the original.



Shave the foam to match the templates.



Finish by attaching a thin piece of fabric over the top.

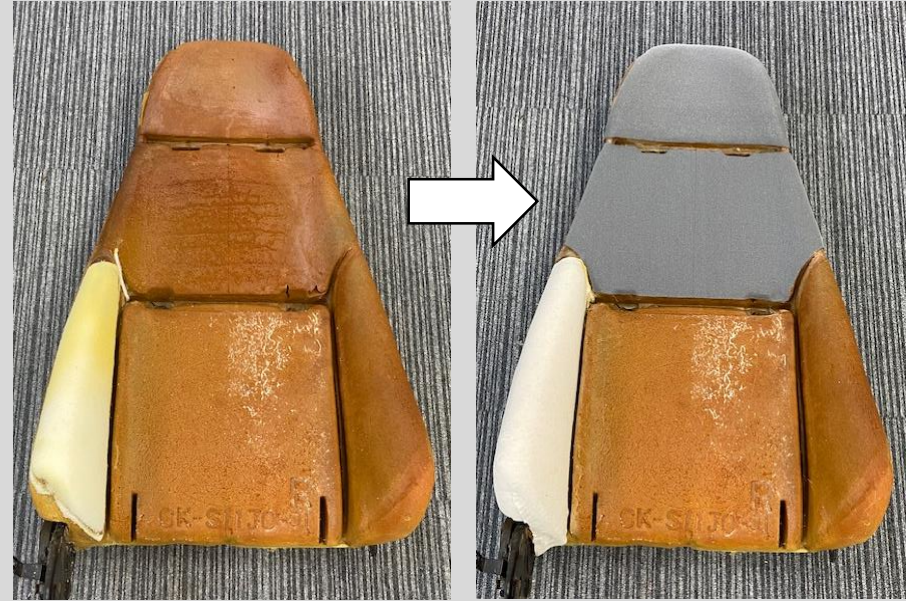


In many cases, the side bolsters may look normal, but the urethane has become thin over time. So apply urethane foam of the same density to the area and shape them to fix.





Likewise, fix the seatback (back) that is damaged when getting in and out of the car.



A thin layer of urethane foam is applied to protect areas that have deteriorated due to sunlight or sweat.



If the cushions are sagging after years of use, we apply urethane foam to improve the seating comfort.





At the customer's request,  
we have applied black denim fabric to the Beat Seat trim covers.  
(It is for clothing material and not sure about the physical properties though.)

We can repair the base urethane foam and replace the trim covers.  
Please contact us if necessary.

We can also modify the shape of the urethane foam to meet customer's requests  
(such as strengthening side supports, improving cushioning, and preventing back pain).

The material is not limited to zebra-patterned fabric, but we can also replace the surface  
with any material that meets your needs.

If you want to use genuine materials, we can use genuine leather or the suede material  
used on the NSX, INTEGRA, and CIVIC Type-R.

For those who want air permeability, we also have perforated materials.

We are currently recreating the mesh surface material used in the NSX 02 Type-R  
and other Type-R models, which is more breathable, and will be available soon.

For those who want to enjoy the open road without worrying about rain or sunlight,  
we can also provide our original weather-resistant and water-resistant leather.

(For more information about weather and water resistant leather, please refer to our H/P.)